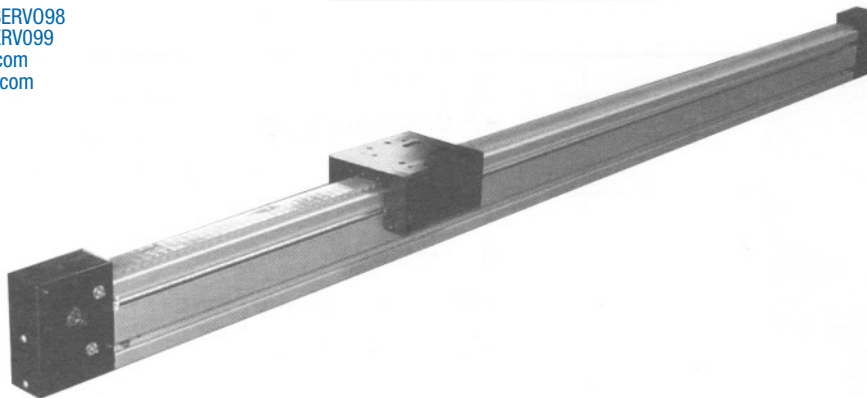


**MACRON 6  
 LINEAR ACTUATOR**



**Features**

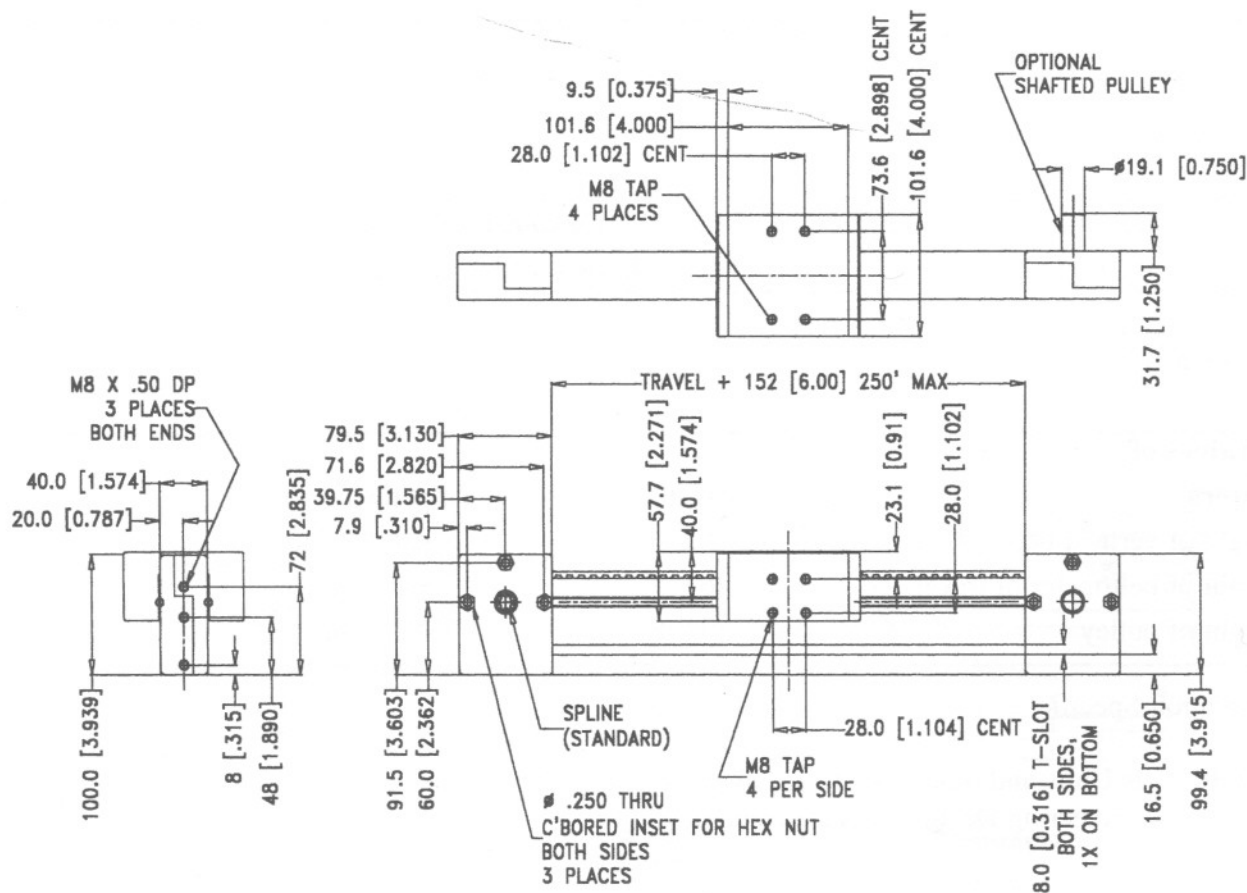
- Macron actuators are furnished to your specifications
- Available in any length up to 76.2 meters (250 ft.)
- Fast turnaround on all standard units

**Optional**

- Wrap-Around Cart (WAC)
- Extra Cart
- Sensors
- Bellows

**Motor Mounting** (See Page 22)

- Motor Mount Adapter
- NEMA 23, 34 & 42 (standard)
- 48, 56 & non-NEMA sizes (optional)
- Spline Adapter
- Shafted Pulley



MACRON 6 LINEAR ACTUATOR - dimensional data



Sold & Serviced By:



Toll Free Phone (877) SERV098  
 Toll Free Fax (877) SERV099  
[www.electromate.com](http://www.electromate.com)  
[sales@electromate.com](mailto:sales@electromate.com)

**Specifications:**

**MACRON 6  
 LINEAR ACTUATOR**

**TECHNICAL DATA**

Repeatability		+/- 0.001 in
Linear Accuracy		+/- 0.005 in per 36 in
Breakaway Torque		30 - 32 oz-in
Belt Tensile Limit		1750 lbs
Belt Running Load		0 - 500 lbs
Travel/Revolution		150 mm/rev (5.906) in/rev)
Pulley Diameter		47.75 mm (1.88 in)
Pulley Weight (each)		9.5 oz
Maximum Speed		400 in/sec
Acceleration Exceeding		9 G's
Motor Mount/Coupling		NEMA 23, 34 & 42 (standard), 48, 56 & non-NEMA sizes (optional)

**Shipping Weight**

First meter of travel		23.1 lbs
Additional per meter		11.8 lbs

**Load Capacities**

Dynamic Horizontal		To Customer Specifications
Static Horizontal		To Customer Specifications

**Inertia Calculation**

~ W values of actuators	weight	inertia
~ weight of cart & hardware	3.406 lbs	3.003 lbs - in <sup>2</sup>
~ weight of belt/meter of travel	.938 lbs/m	0.827 lbs - in <sup>2</sup>
~ weight of (two) pulleys	1.188 lbs	0.524 lbs - in <sup>2</sup>

For Multi-Axis Units and other specifications not listed, contact your local Distributor or Macron for Engineering Design assistance and quotations.