

Product Data



JVL ...when motors must be controlled

MacTalk

Setup and diagnosis software for the integrated servo motors **MAC50, 95 and 140** and **MAC400 and 800**



With JVL's MacTalk software it is easy to setup and diagnose a MACxxx integrated servo motor.

MacTalk allows you to adjust all vital parameters and save/load parameters to/from the disk. It is also possible to monitor vital motor parameters and motor status in real time.

MacTalk features online communication with the motor and it is possible to change all parameters online.

Firmware update function: MacTalk allows you to update the firmware in the motor and the firmware in expansion modules like the MAC00-Rx. Simply connect the motor, select Updates/Firmware, and press <Start>.

If you are connected to the Internet the program will

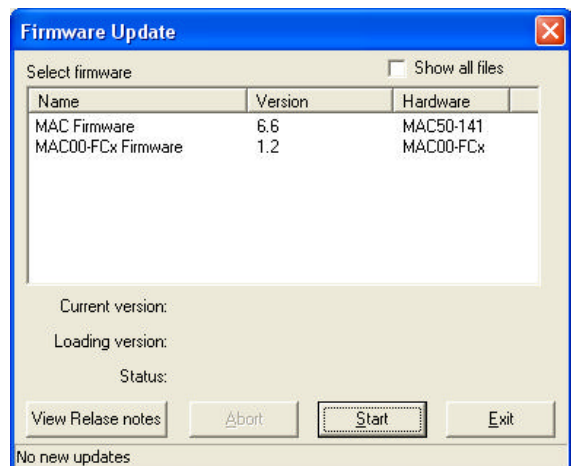
automatically search for new firmware versions and download them to your computer.

MacTalk internet updating: MacTalk features an automatic update function.

If you are connected to the internet, MacTalk will show you which new versions are available. You will also be able to see which changes apply to the version.

When selecting

Updates/MacTalk and pressing <Download & Install>, the new version will be downloaded and installed automatically.



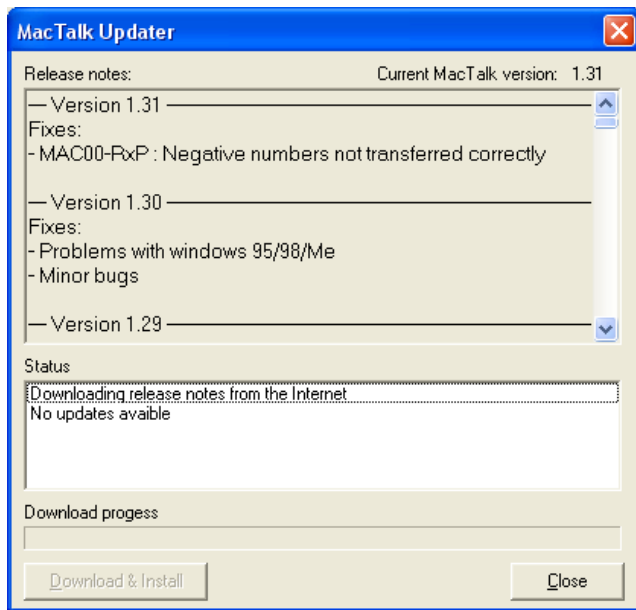
LD0046-03GB

Sold & Serviced By: **ELECTROMATE**

Toll Free Phone (877) 587-0938
Toll Free Fax (877) 587-0939
www.electromate.com
sales@electromate.com

Date: 26-10-04

MacTalk

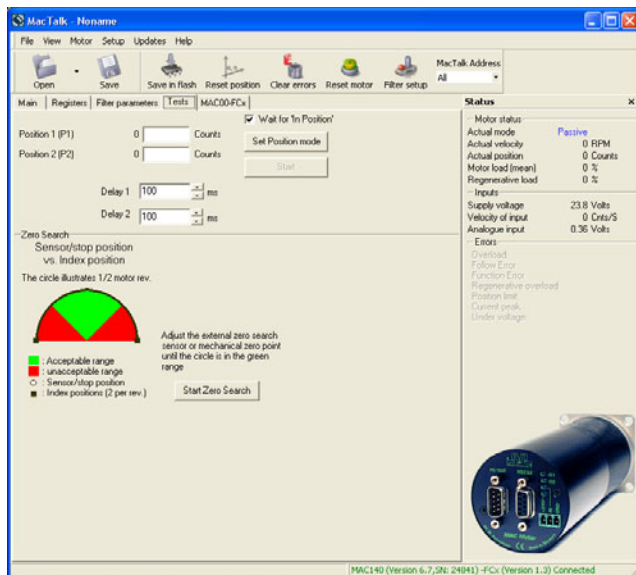


System test:

MacTalk provides a convenient way to test and adjust your system.

You can easily set up a test sequence, and then adjust parameters like velocity, acceleration and torque.

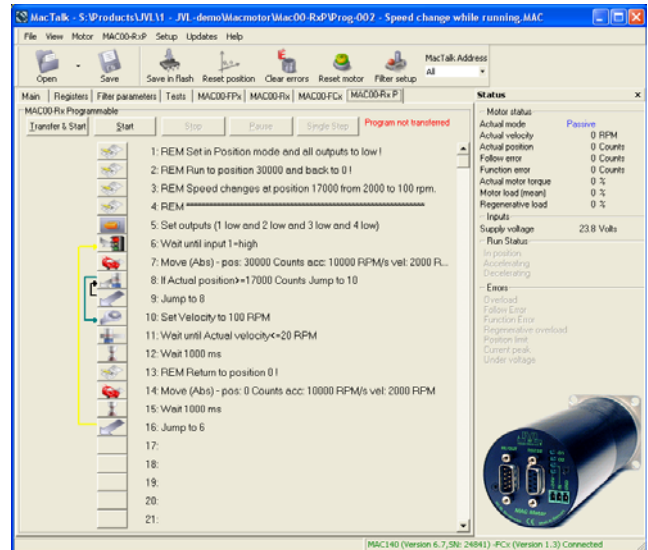
It is possible to select the distance moved and the delay between the moves.



Module support:

MacTalk will automatically detect installed modules and display a new page with special setups for the relevant expansion module.

Example: For the MAC00-Rx module, it is possible to see the status of the input and outputs. It is also possible to download new control programs to the module.



System requirements:

Windows 9x/NT/2000/XP

Min. 32Mb RAM

Screen resolution 800x600

Available COM port.

2.5MB hard disk space

(Internet connection for automatic updates)



JVL Industri Elektronik A/S
 Blokken 42
 DK-3460 Birkerød, Denmark
 Tel: +45 4582 4440
 Fax: +45 4582 5550

E-mail: jvl@jvl.dk www.jvl.dk
 Sold & Serviced By:

ELECTROMATE

Toll Free Phone (877) SERV098
 Toll Free Fax (877) SERV099
www.electromate.com
sales@electromate.com