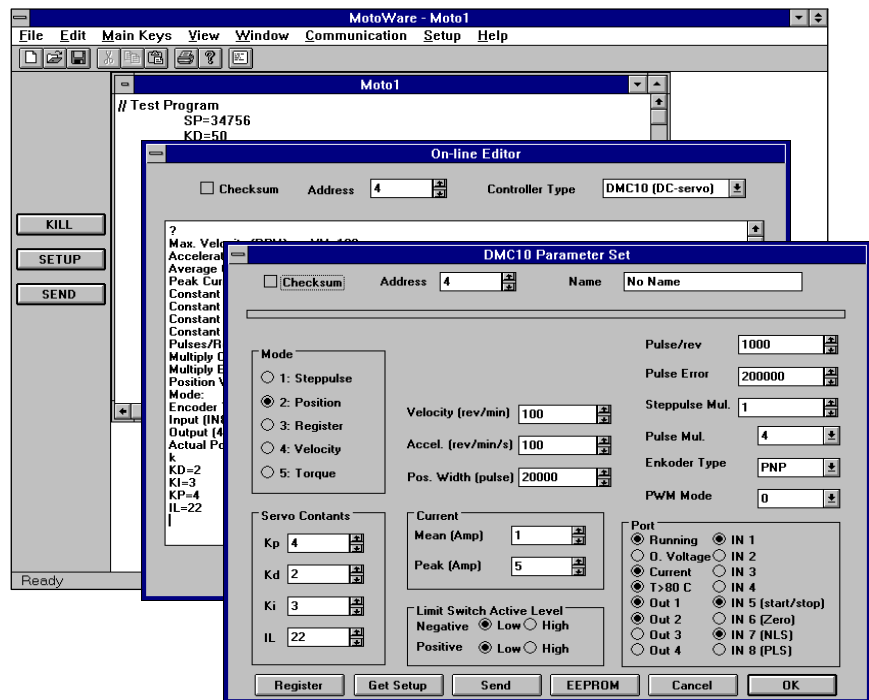




## MotoWare

### Programming Software for JVL Controllers



With JVL's windows-based programming tool, MotoWare, it is easy to program your motor controller.

MotoWare allows you to easily edit one or several control programs simultaneously. Each program is saved in a separate file which can be opened and edited as required. Once a program has been written, it can be easily transferred to a Controller.

The Controller type, Controller address and whether checksum is to be used during transmission are selected. The [Send] button is then selected and the control program is transferred in

the correct format to the selected controller.

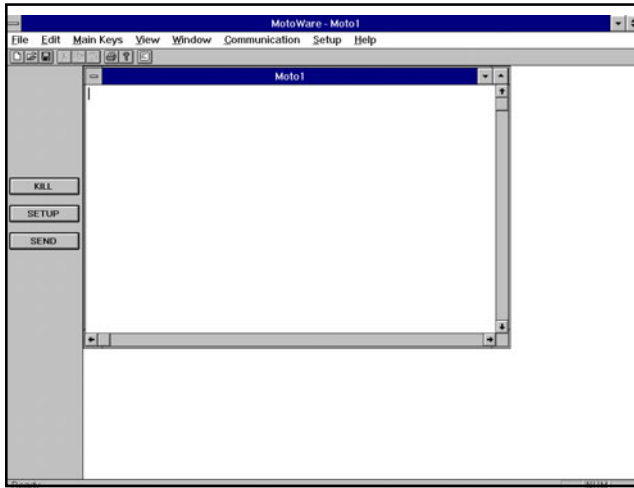
MotoWare also enables "on-line" communication with a motor controller. The on-line editor window functions in the same way as a terminal program. Key in a command string, press [Enter] and the command is sent to the selected controller. All responses from the controller are automatically detected and displayed.

For users of JVL step- and servo controllers, it is easy to create the correct set-up. MotoWare windows display a total overview of the various parameters. Several parameter sets can be

stored using individual names, and these sets can be opened, edited and sent to the controller. The set-up of a specific controller can also be retrieved from the controller and displayed on the screen or stored in the computer.

# MotoWare

Motoware is supplied on a 3 1/2" diskette and is easily installed on a PC that fulfils the "System Requirements" below. MotoWare is built up like other standard Windows programs and it is therefore very easy to get started and use the program. The Main Menu is shown below:



The Main Menu can, as shown here, also contain document windows.

Controller programs are easily opened and edited. Simply select your controller and whether addressing and checksum are used. The control program code itself is written in a very simple BASIC-like language that is quickly learned. Once a program has been written, the SEND button is used to transmit the program to the controller in the correct format depending on the selected controller type, with information on addressing and checksum. If there is an error in the program code, the program line containing the error is automatically displayed.

The control program can be saved on hard-disk or diskette for subsequent use.

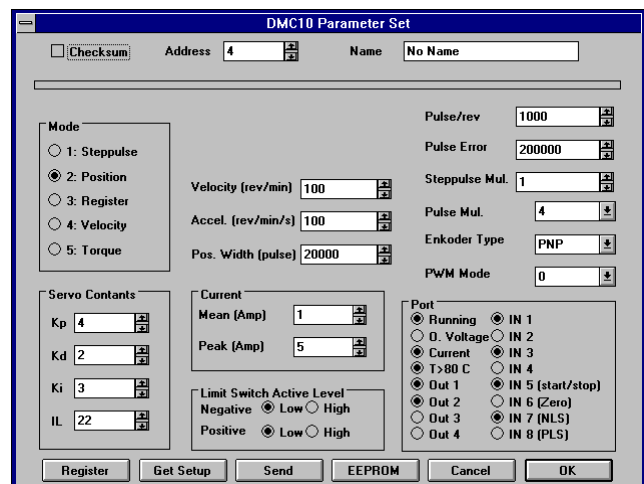
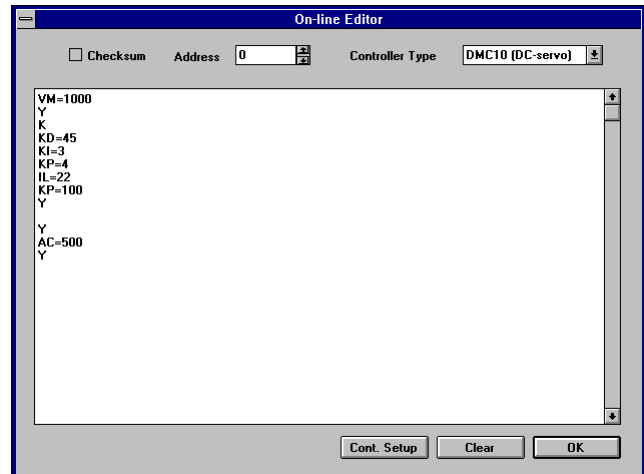
The On Line Editor, shown below, enables direct communication with your controller. Simply key-in the command line, press <ENTER> and the command is sent to the controller in the correct format, with addressing and checksum information. Messages from the controller are received and automatically displayed.

## System Requirements

PC with Windows 95 or later

COM port available

Hard-disk with 5 Mbyte available space



It is also possible to obtain a very quick overview of the set-up of your servo-controller. A window shows the most important set-up parameters. To adjust individual parameters, simply key-in the required value in the correct field and select SEND. The new value is then set up on the Controller. It couldn't be simpler.

Motoware can be used for programming all JVL Motor Controllers, both step- and servo controllers, except the MAC series of integrated servo motors which uses the MacTalk software



JVL Industri Elektronik A/S  
Blokken 42  
DK-3460 Birkerød, Denmark  
Tel: +45 4582 4440  
Fax: +45 4582 5550  
E-mail: [jvl@jvl.dk](mailto:jvl@jvl.dk) [www.jvl.dk](http://www.jvl.dk)

Sold & Serviced By:  
**ELECTROMATE**

Toll Free Phone (877) SERV098  
Toll Free Fax (877) SERV099  
[www.electromate.com](http://www.electromate.com)  
[sales@electromate.com](mailto:sales@electromate.com)