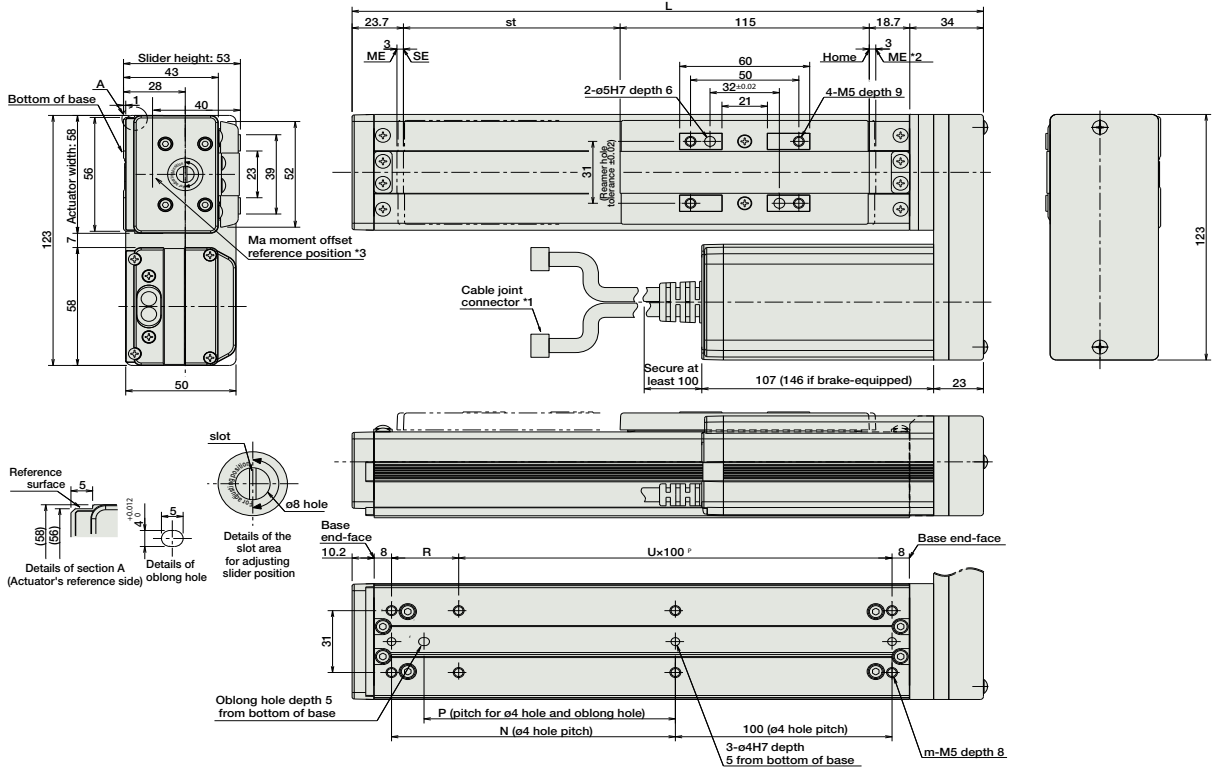


Dimensions

For Special Orders P. A-9



■ Dimensions/Weight by Stroke

* Brake-equipped models are heavier by 0.3kg.

| Stroke | 50 | 100 | 150 | 200 | 250 | 300 | 350 | 400 | 450 | 500 | 550 | 600 |
|-------------|-------|-------|-------|-------|-------|-------|-------|-------|-------|-------|-------|-------|
| L | 241.4 | 291.4 | 341.4 | 391.4 | 441.4 | 491.4 | 541.4 | 591.4 | 641.4 | 691.4 | 741.4 | 791.4 |
| N | 81 | 131 | 181 | 231 | 281 | 331 | 381 | 431 | 481 | 531 | 581 | 631 |
| P | 66 | 116 | 166 | 216 | 266 | 316 | 366 | 416 | 466 | 516 | 566 | 616 |
| R | 81 | 31 | 81 | 31 | 81 | 31 | 81 | 31 | 81 | 31 | 81 | 31 |
| U | 1 | 2 | 2 | 3 | 3 | 4 | 4 | 5 | 5 | 6 | 6 | 7 |
| m | 6 | 8 | 8 | 10 | 10 | 12 | 12 | 14 | 14 | 16 | 16 | 18 |
| Weight (kg) | 1.7 | 1.9 | 2.1 | 2.3 | 2.5 | 2.7 | 2.9 | 3.1 | 3.3 | 3.5 | 3.7 | 3.9 |

- *1 The motor-encoder cable is connected here. See page A-39 for details on cables.
- *2 When homing, the slider moves to the ME; therefore, please watch for any interference with the surrounding objects.
ME: Mechanical end SE: Stroke end
- *3 Reference position for calculating the moment Ma.

③ Compatible Controllers

The RCS2 series actuators can operate with the controllers below. Select the controller according to your usage.

| Name | External View | Model | Description | Max. Positioning Points | Input Voltage | Power Supply Capacity | Standard Price | See Page |
|--------------------------------|---------------|--------------------------|--|-------------------------|---|---|----------------|----------|
| Positioner Mode | | SCON-C-30D①-NP-2-② | Positioning is possible for up to 512 points | 512 points | Single-Phase AC 100V Single-Phase AC 200V 3-Phase AC 200V (XSEL-P/Q only) | 360VA max. * When operating a 150W single-axis model | - | → P547 |
| Solenoid Valve Mode | | | Operable with same controls as solenoid valve. | 7 points | | | | |
| Serial Communication Type | | | Dedicated to serial communication | 64 points | | | | |
| Pulse Train Input Control Type | | | Dedicated to Pulse Train Input | (-) | | | | |
| Program Control 1-2 Axis Type | | SSEL-C-1-30D①-NP-2-② | Programmed operation is possible Can operate up to 2 axes | 20000 points | | | - | → P577 |
| Program Control 1-6 Axis Type | | XSEL-③-1-30D①-N1-EEE-2-④ | Programmed operation is possible Can operate up to 6 axes | 20000 points | | | - | → P587 |

- * For SSEL and XSEL, only applicable to the single-axis model.
- * ① is a placeholder for the encoder type (I: incremental, A: absolute).
- * ② is a placeholder for the power supply voltage (1: 100V, 2: single-phase 200V, 3: 3-phase 200V).
- * ③ is a placeholder for the XSEL type name (J, K, P, or Q).
- * ④ is a placeholder for the power supply voltage (1: 100V, 2: single-phase 200V, 3: 3-phase 200V).

- Slider Type
- Mini
- Standard
- Controllers Integrated
- Rod Type
- Mini
- Standard
- Controllers Integrated
- Table/Arm /Flat Type
- Mini
- Standard
- Gripper/ Rotary Type
- Linear Servo Type
- Cleanroom Type
- Splash-Proof
- Controllers
- PMEC /AMEC
- PSEP /ASEP
- ROBO NET
- ERC2
- PCON
- ACON
- SCON
- PSEL
- ASEL
- SSEL
- XSEL
- Pulse Motor
- Servo Motor (24V)
- Servo Motor (200V)
- Linear Servo Motor