

RCA2-TFA4N

ROBO Cylinder Mini Table Type Short-Length Flat Model 71mm Width
24V Servo Motor Ball Screw/Lead Screw Models

■ Configuration: **RCA2** — **TFA4N** — **I** — **20** — — **30** — — —

Series — Type — Encoder — Motor — Lead — Stroke — Compatible Controllers — Cable Length — Option

I: Incremental
* The simple absolute encoder is also considered type "I".

20: 20W Servo motor

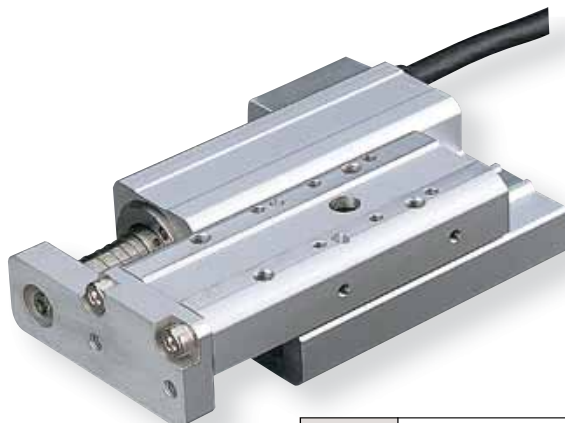
6: 6mm ball screw
4: 4mm ball screw
2: 2mm ball screw
6S: 6mm lead screw
4S: 4mm lead screw
2S: 2mm lead screw

A1: ACON
RACON
ASEL
A3: AMEC
ASEP

N: None
P: 1m
S: 3m
M: 5m
X : Custom

K2: Connector cable exit direction
LA: Power-saving

* See page Pre-35 for an explanation of the naming convention.



Power-saving

Technical References P. A-5

4 POINT Notes on Selection

- (1) The load capacity is based on operation at an acceleration of 0.3G (0.2G for the 2mm-lead model, or when used vertically). This is the upper limit of the acceleration.
- (2) When using the Lead screw model, please ensure that your usage is appropriate for its characteristics. (See page Pre-42 for more information.)

| Actuator Specifications | | | | | | | | | |
|-----------------------------|------------------|------------|-----------|--------------------|---------------|------------------|--------------------------------|-------------|--|
| ■ Lead and Load Capacity | | | | | | | | | |
| Model | Motor Output (W) | Feed Screw | Lead (mm) | Max. Load Capacity | | Rated Thrust (N) | Positioning Repeatability (mm) | Stroke (mm) | |
| | | | | Horizontal (kg) | Vertical (kg) | | | | |
| RCA2-TFA4N-I-20-6-30-①-②-③ | 20 | Ball screw | 6 | 2 | 0.5 | 33.8 | ±0.02 | 30 (Fixed) | |
| RCA2-TFA4N-I-20-4-30-①-②-③ | | | 4 | 3 | 0.75 | 50.7 | | | |
| RCA2-TFA4N-I-20-2-30-①-②-③ | | | 2 | 6 | 1.5 | 101.5 | | | |
| RCA2-TFA4N-I-20-6S-30-①-②-③ | 20 | Lead screw | 6 | 0.25 | 0.125 | 19.9 | ±0.05 | 30 (Fixed) | |
| RCA2-TFA4N-I-20-4S-30-①-②-③ | | | 4 | 0.5 | 0.25 | 29.8 | | | |
| RCA2-TFA4N-I-20-2S-30-①-②-③ | | | 2 | 1 | 0.5 | 59.7 | | | |

Legend ① Compatible controller ② Cable length ③ Options

| ■ Stroke and Maximum Speed | | |
|----------------------------|----------------|-----|
| Lead | Stroke 30 (mm) | |
| | Ball screw | 6 |
| Lead screw | 4 | 200 |
| | 2 | 100 |
| | 6 | 220 |
| Lead screw | 4 | 200 |
| | 2 | 100 |

* The values enclosed in "< >" apply to vertical usage. (Unit: mm/s)

| Stroke List | | |
|-------------|------------------|------------------|
| Stroke (mm) | Standard Price | |
| | Feed Screw | |
| | Ball Screw Model | Lead Screw Model |
| 30 | - | - |

| ② Cable List | | |
|-------------------------|-----------------------|----------------|
| Type | Cable Symbol | Standard Price |
| Standard (Robot Cables) | P (1m) | - |
| | S (3m) | - |
| | M (5m) | - |
| Special Lengths | X06 (6m) ~ X10 (10m) | - |
| | X11 (11m) ~ X15 (15m) | - |
| | X16 (16m) ~ X20 (20m) | - |
| | | |

* The RCA2 comes standard with a robot cable.
* See page A-39 for cables for maintenance.

| ③ Option List | | | |
|--------------------------------|-------------|----------|----------------|
| Name | Option Code | See Page | Standard Price |
| Connector cable exit direction | K2 | → A-32 | - |
| Power-saving | LA | → A-32 | - |

| Actuator Specifications | |
|----------------------------------|---------------------------------------------------------------------|
| Item | Description |
| Drive System | Ball screw/Lead screw ø6mm C10 grade |
| Lost Motion | Ball screw: 0.1mm or less/Lead screw: 0.3mm or less (initial value) |
| Frame | Material: Aluminum (white alumite treated) |
| Allowable Dynamic Moment (Note) | Ma: 9.9 N·m Mb: 9.9 N·m Mc: 3.3 N·m |
| Ambient Operating Temp./Humidity | 0~40°C, 85% RH or less (non-condensing) |
| Service Life | Horizontal: 10 million cycles Vertical: 5 million cycles |

(Note) Based on a 5,000 km service life set for the guide.

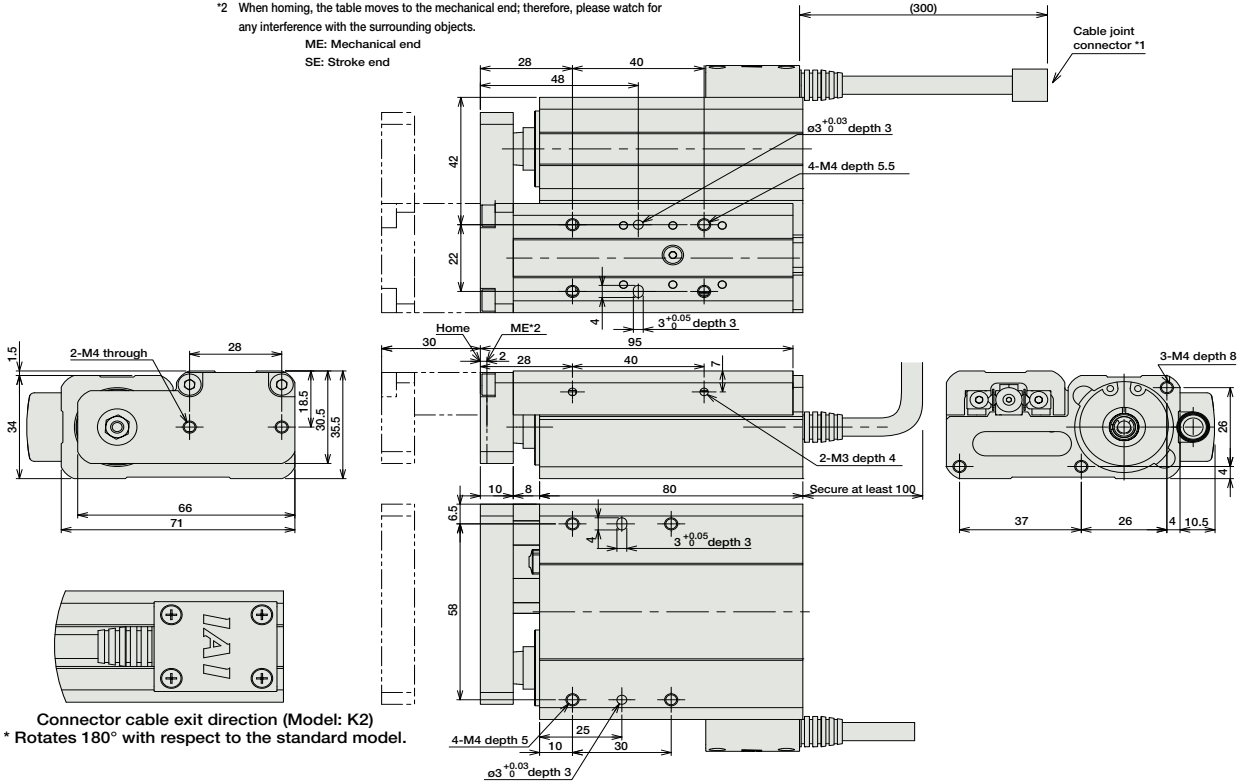
299 RCA2-TFA4N

Dimensions

For Special Orders P. A-9

- *1 The motor-encoder cable is connected here. See page A-39 for details on cables.
- *2 When homing, the table moves to the mechanical end; therefore, please watch for any interference with the surrounding objects.

ME: Mechanical end
SE: Stroke end



Connector cable exit direction (Model: K2)
* Rotates 180° with respect to the standard model.

■ Dimensions/Weight by Stroke

| Stroke | 30 |
|-------------|-----|
| Weight (kg) | 0.6 |

① Compatible Controllers

The RCA2 series actuators can operate with the controllers below. Select the controller according to your usage.

| Name | External View | Model | Description | Max. Positioning Points | Input Voltage | Power Supply Capacity | Standard Price | See Page |
|---------------------------------------------------|---------------|----------------------|---------------------------------------------------------------------------------------------------------------------------------------------|-------------------------|---------------|----------------------------------------------------------------------------------------|----------------|----------|
| Solenoid Valve Type | | AMEC-C-201①-NP-2-1 | Easy-to-use controller, even for beginners | 3 points | AC100V | 2.4A rated | - | → P477 |
| | | ASEP-C-201①-NP-2-0 | Operable with same signal as solenoid valve. Supports both single and double solenoid types. No homing necessary with simple absolute type. | | | | - | → P487 |
| Splash-Proof Solenoid Valve Type | | ASEP-CW-201①-NP-2-0 | | | | | - | |
| Positioner Type | | ACON-C-201①-NP-2-0 | Positioning is possible for up to 512 points | 512 points | DC24V | (Standard) 1.3A rated 4.4A max. (Power-saving) 1.3A rated 2.5A max. | - | → P535 |
| Safety-Compliant Positioner Type | | ACON-CG-201①-NP-2-0 | | | | | - | |
| Pulse Train Input Type (Differential Line Driver) | | ACON-PL-201①-NP-2-0 | Pulse train input type with differential line driver support | (-) | DC24V | (Standard) 1.3A rated 4.4A max. (Power-saving) 1.3A rated 2.5A max. | - | → P535 |
| Pulse Train Input Type (Open Collector) | | ACON-PO-201①-NP-2-0 | Pulse train input type with open collector support | | | | - | |
| Serial Communication Type | | ACON-SE-201①-N-0-0 | Dedicated to serial communication | 64 points | | | - | |
| Field Network Type | | RACON-20① | Dedicated to field network | 768 points | | | - | → P503 |
| Program Control Type | | ASEL-C-1-201①-NP-2-0 | Programmed operation is possible. Operation is possible on up to 2 axes | 1500 points | | | - | → P567 |

* This is for the single-axis ASEL.
* ① is a placeholder for the code "LA" if the power-saving option is specified.



RCA2-TFA4N **300**

- Slider Type
- Mini
- Standard
- Controllers Integrated
- Rod Type
- Mini
- Standard
- Controllers Integrated
- Table/Arm /Flat Type
- Mini
- Standard
- Gripper/ Rotary Type
- Linear Servo Type
- Cleanroom Type
- Splash Proof
- Controllers
- PMEC /AMEC
- PSEP /ASEP
- ROBO NET
- ERC2
- PCON
- ACON
- SCON
- PSEL
- ASEL
- SSEL
- XSEL
- Pulse Motor
- Servo Motor (24V)
- Servo Motor (200V)
- Linear Servo Motor