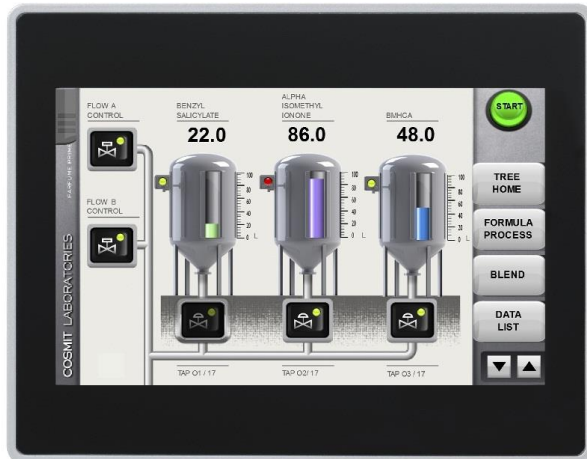


# UniOP eTOP507W

The UniOP eTOP Series 500W HMI products combine state-of-the-art features and top performance with an outstanding design. They are the ideal choice for all demanding HMI applications including factory and building automation. These products are a cost-effective and low-power requirement platform for delivering applications based on Microsoft Windows CE 6.0 R3.

The eTOP507W features a bright 7" TFT widescreen (16:9) display with a fully dimmable LED backlight.



- ARM Cortex A8 600MHz CPU
- 256MB DDR RAM
- 7" TFT color display, LED backlight
- 800x480 pixel (WVGA) resolution, 64K colors
- Resistive touchscreen
- 2 Ethernet ports with switch function
- 2 USB Host ports
- SD Card Slot
- Slim design. Mounting depth less than 50mm

## Highlights

The eTOP Series 500W HMI panels are a fast and low-power running the Microsoft Windows CE 6 operating system. The fanless design and wide operating temperature range are suitable for the most demanding industrial environments. The richness of communication options make these products easy to integrate in most systems.

## Technical Data

<b>Display</b> Type Resolution Active display area Colors Backlight Brightness Dimming	TFT 800x480, WVGA 7" diagonal 64K LED 300 Cd/m <sup>2</sup> typ. Yes	Battery Rechargeable Lithium battery, not user-replaceable
<b>System Resources</b> CPU Operating System User memory RAM	ARM Cortex A8 600MHz Microsoft Windows CE 6.0 128 MB Flash 256MB DDR	<b>Environmental Conditions</b> Operating temperature Storage temperature Operating and storage humidity Protection class
<b>Operator Interface</b> Touchscreen LED indicators	Analog resistive 1 (dual color)	0 to 50 °C (vertical installation) -20 to +70 °C 5 – 85 % relative humidity, non-condensing IP66 (front) IP20 (rear)
<b>Interface</b> Ethernet USB Serial Expansion Slot Memory Card	2 10/100 Mbit with integrated Switch 2 Host Interface (1 version 2.0, 1 version 2.0 and 1.1) RS-232, RS-485, RS-422, software configurable 2 Optional plug-in SD Card Slot	<b>Dimensions</b> Faceplate LxH Cutout AxB Depth D+T
<b>Functionality</b> Hardware Real Time Clock Screen saver Buzzer	Yes, with battery back-up Yes Yes, audible feedback for touchscreen	<b>Approvals</b> CE Emission EN 61000-6-4 Immunity EN 61000-6-2 for installation in industrial environments DNV DNV Type Approval Certificate UL UL508 Listed Haz. Loc. Class I, Division 2, Groups A,B,C and D. C-Tick C-Tick mark GL Germanischer Lloyd Type Approval Certificate
<b>Ratings</b> Power supply voltage Current consumption Fuse Weight	24 Vdc (10 to 32 Vdc) 0.65A at 24Vdc(max.) Automatic Approx 1.0 Kg	

Sold & Serviced By:



Canadian and International Sales

**ELECTROMATE**

877-737-8698

[sales@electromate.com](mailto:sales@electromate.com)

[www.electromate.com](http://www.electromate.com)

U.S. Sales

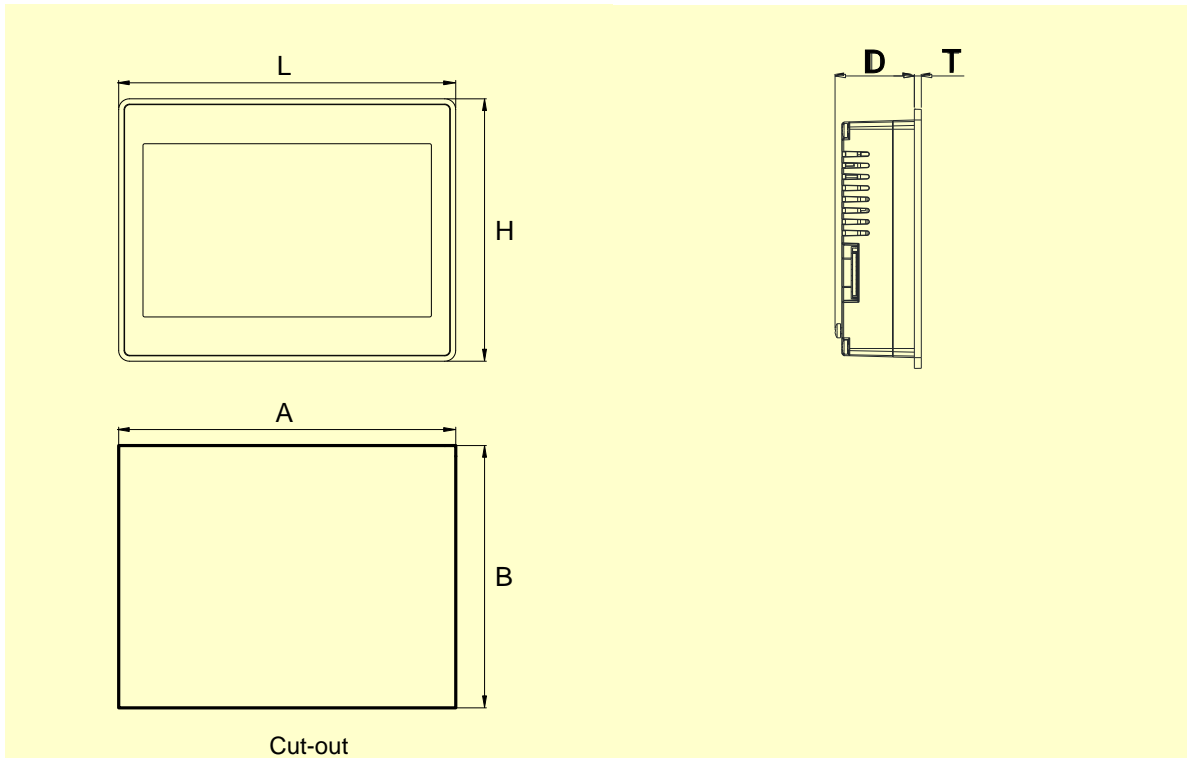
**SERVO2GO.com**

877-378-0240

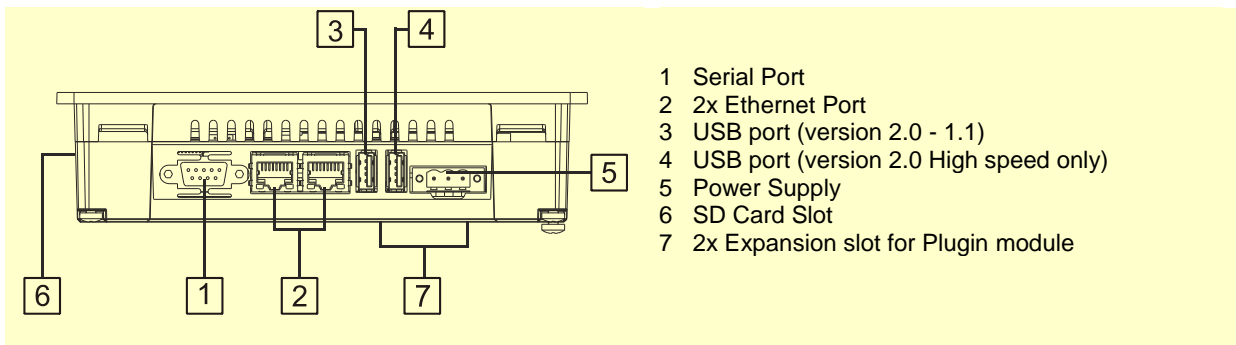
[sales@servo2go.com](mailto:sales@servo2go.com)

[www.servo2go.com](http://www.servo2go.com)

**Dimensions**



**Connections**



**Sold & Serviced By:**



*Canadian and International Sales*

**ELECTROMATE**

877-737-8698

[sales@electromate.com](mailto:sales@electromate.com)

[www.electromate.com](http://www.electromate.com)

*U.S. Sales*



877-378-0240

[sales@servo2go.com](mailto:sales@servo2go.com)

[www.servo2go.com](http://www.servo2go.com)

## Ordering Information

Model	Part Number	Description
eTOP507W-White	+ETOP507U1PW	7" widescreen TFT color touchscreen with Ethernet and USB interfaces. White front panel.
eTOP507W-Silver	+ETOP507U2PW	7" widescreen TFT color touchscreen with Ethernet and USB interfaces. Silver front panel.
eTOP507W-Black	+ETOP507U3PW	7" widescreen TFT color touchscreen with Ethernet and USB interfaces. Black front panel.
PROTFOIL-07-GL	R-PROT12	Disposable protection foil for 5.7" and 7" eTOP touch panels (10 pieces).
PROTFOIL-07-UV	R-PROT18	Disposable protection foil for 5.7" and 7" eTOP touch panels (10 pieces). UV resistant.

Sold & Serviced By:



*Canadian and International Sales*

**ELECTROMATE**

877-737-8698

[sales@electromate.com](mailto:sales@electromate.com)

[www.electromate.com](http://www.electromate.com)

*U.S. Sales*

**SERVO2GO.com**

877-378-0240

[sales@servo2go.com](mailto:sales@servo2go.com)

[www.servo2go.com](http://www.servo2go.com)

ptn0457

Ver. 1.0

Copyright © 2011-2014 Exor International S.p.A. – Verona, Italy

Subject to change without notice

The information contained in this document is provided for informational purposes only. While efforts were made to verify the accuracy of the information contained in this documentation, it is provided "as is" without warranty of any kind.

[www.uniop.com](http://www.uniop.com)