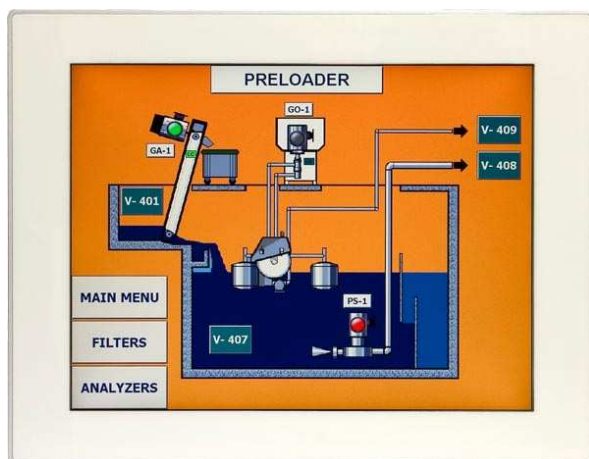


# UniOP eTOP315

The UniOP eTOP Series 300 combines state-of-the-art features and performance with an outstanding design. They are the ideal choice for HMI applications including factory and building automation. The eTOP315 features a bright 15" TFT display with full vector graphic capabilities. This is the ideal product for high-end HMI applications. Connections include Ethernet and USB.



- 15" TFT color display, CCFL backlight
- 1024x768 pixel (XVGA) resolution, 64K colors
- Advanced vector graphics
- Resistive touchscreen
- 64 MB user memory
- 10/100 Ethernet interface
- USB interface
- Connection to bus systems using optional plug-in modules
- Slim design. Mounting depth less than 50mm

## Highlights

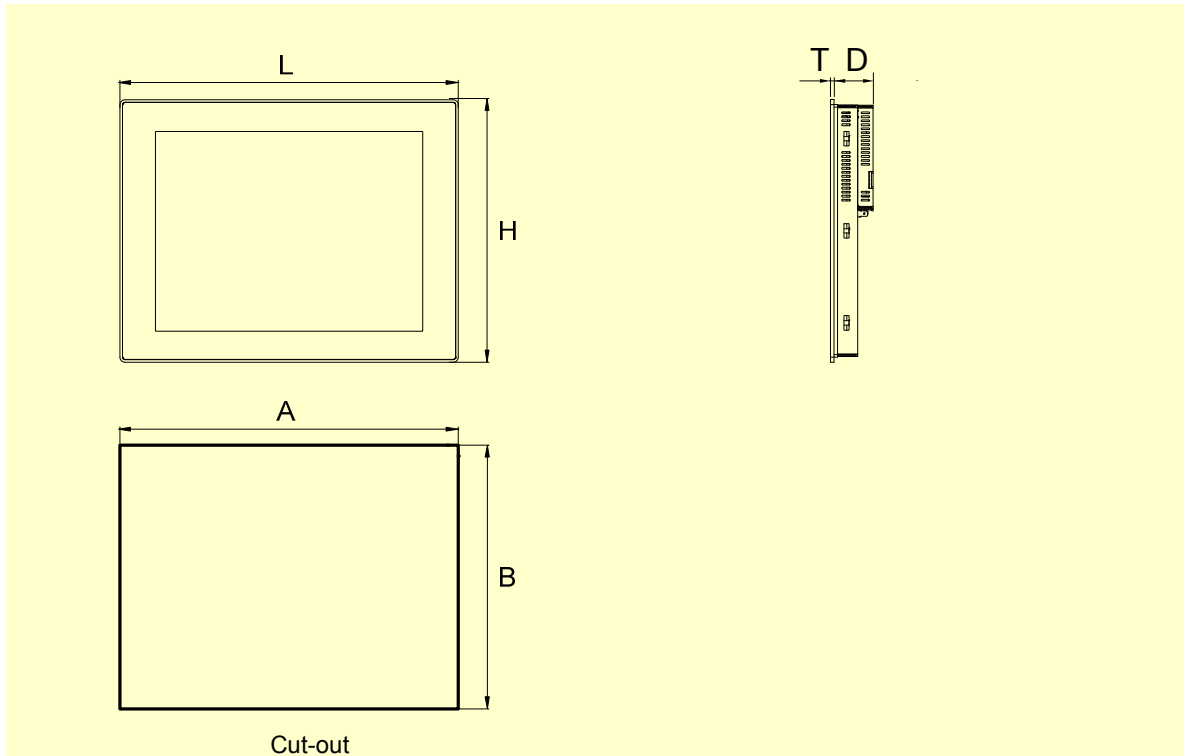
The eTOP Series 300 HMI panels are fully compatible with UniOP Designer 6 software.

- Powerful and intuitive programming with the UniOP Designer 6 software.
- Supports more than 150 communication drivers.
- Built-in Ethernet port for communication with devices, programming the HMI from Designer and retrieving data from computers.
- USB host port for the connection of flash drives. Flash drives can be used for upgrading applications and firmware.
- Optional plug-in modules for fieldbus systems and networks. Compatible with TCM and SCM modules.
- Dual-driver communication capability.
- Vector graphic capabilities including the support of multiple layers and object transparency.
- Data display in numerical, text, bargraph, analog gauges and graphic image formats. Dynamic object properties supported.
- Data acquisition and trend presentation. Trend data can be transferred to a host computer using the Ethernet connection.
- Recipe data storage. Recipe data can be transferred to a host computer using the Ethernet connection or copied to flash drives via USB connection.
- Multilanguage applications. Far East languages are supported. The number of runtime languages is limited only by the available memory. All text information in the application can be exported to files in Unicode format for easier translation.
- Powerful macro editor to configure touchscreen operation
- Alarms and historical alarm list. Alarm and event information can be printed or transferred to a host computer.
- Eight level password protection.
- Report printing to serial printer. Reports are freely configurable using Designer.
- Ethernet-based UniNet network to share data between UniOP HMIs and to serve data using UniNet OPC Server.

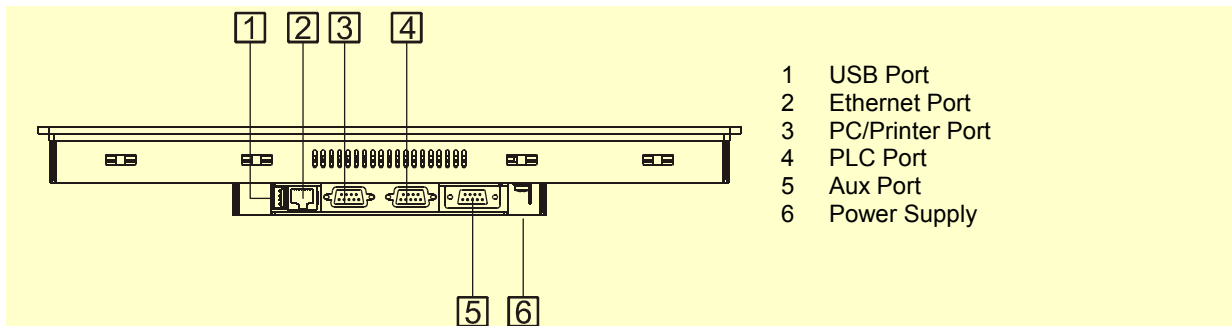
## Technical Data

<b>Display</b>		<b>Password</b>	
Type	TFT	Hardware Real Time	Yes
Resolution	1024x768, XVGA	Clock	Yes, with battery back-up
Active display area	15" diagonal	Screen saver	Yes
Colors	64K	Buzzer	Yes, audible feedback for touchscreen
Backlight	CCFL	<b>Ratings</b>	
Brightness	250 Cd/m <sup>2</sup> typ.	Power supply voltage	24 Vdc (18 to 30 Vdc)
Dimming	Yes	Current consumption	1.1 A at 24 Vdc(max.)
<b>Memory</b>		Fuse	Automatic
User memory	64 MB internal Flash	Weight	Approx 3.4 Kg
<b>Front panel</b>		Battery	Rechargeable Lithium battery, not user-replaceable
Touchscreen	Analog resistive	<b>Environmental Conditions</b>	
User LED indicators	1	Operating temperature	0 to 50 °C
System LED indicators	4	Storage temperature	-20 to +70 °C
<b>Interfaces</b>		Operating and storage humidity	5 – 85 % relative humidity, non-condensing
Ethernet port	10/100 Mbit	Protection class	IP65 (front panel) IP20 (rear)
USB port	Host interface, version 1.1	<b>Dimensions</b>	
PC/Printer port	RS-232, RS-485, RS-422, software configurable	Faceplate LxH	392x307 mm
PLC port	RS-232, RS-485, RS-422, software configurable	Cutout AxB	381x296 mm
Aux port	Yes, fieldbus and controller modules	Depth D+T	46mm+5mm
<b>Functionality</b>		<b>Approvals</b>	
Vector graphics	Yes	CE	Emission EN 61000-6-4
Object dynamics (hide/show)	Yes		Immunity EN 61000-6-2 for installation in industrial environments
TrueType fonts	Yes	UL	UL508 Listed Haz. Loc. Class I, Division 2, Groups A,B,C and D.
Dual driver capability	Yes		
Video input	No		
Data acquisition and trends	Yes		
Multilanguage	Yes, number of run-time languages limited only by available memory		
Recipe memory	Yes. Flash memory storage limited only by available memory		
UniNet network	Client/Server		
Alarms	1024		
Event list	1024		

**Dimensions**



**Connections**



**Ordering Information**

<b>Model</b>	<b>Part Number</b>	<b>Description</b>
eTOP315	ETOP315U101	15" TFT color touchscreen with Ethernet and USB interfaces. White front panel.
	ETOP315U201	15" TFT color touchscreen with Ethernet and USB interfaces. Silver front panel.
	ETOP315U301	15" TFT color touchscreen with Ethernet and USB interfaces. Black front panel.
PROT-16		Disposable protection foil for 15" eTOP touch panels (10 pieces).
PROT-22		Disposable protection foil for 15" eTOP touch panels (10 pieces). UV resistant.

---

**ptn0323****Ver. 1.5****Copyright © 2011-2014 Exor International S.p.A. – Verona, Italy**

Subject to change without notice

The information contained in this document is provided for informational purposes only. While efforts were made to verify the accuracy of the information contained in this documentation, it is provided "as is" without warranty of any kind.

www.uniop.com

ptn0323-5.doc - 17.02.2014

UniOP eTOP315