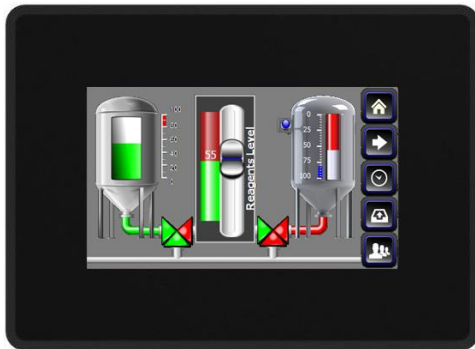


eSMART04

The eSMART Series HMI products combine state-of-the-art features and top performance with an outstanding design. They have been designed to offer an outstanding price/performance ratio for challenging applications. They are the ideal choice for HMI applications including factory and building automation.

eSMART04 features a bright 4.3" TFT widescreen (16:9) display with a fully dimmable LED backlight.



- 4.3" TFT color display, LED backlight
- 480x272 pixel resolution, 64K colors
- Resistive touchscreen
- Ethernet port
- USB port

Highlights

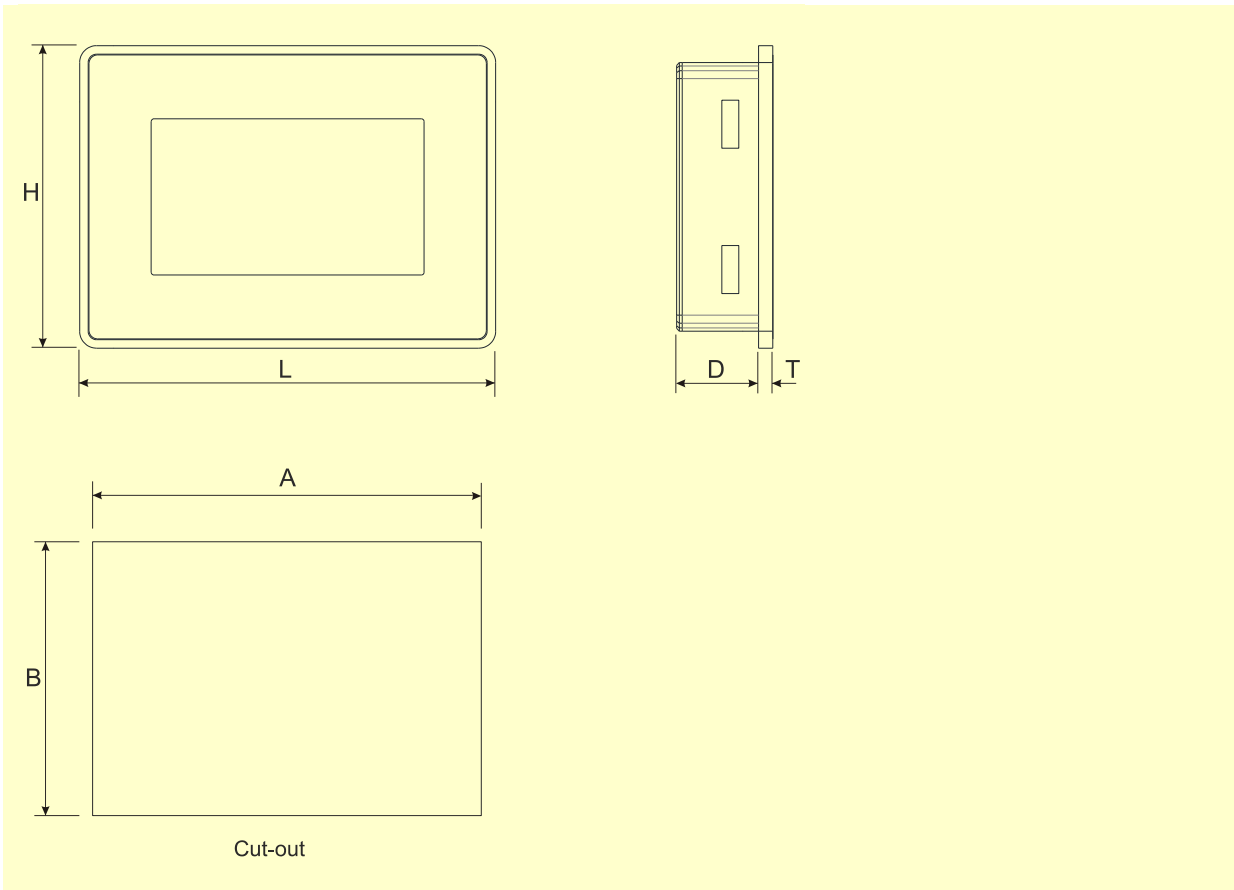
The eSMART HMI products have been designed to run the JMobile software.

- Compatible with JMobileStudio.
- Full vector graphic support. Native support of SVG graphic objects, transparency and alpha blending.
- Screen object dynamics: control visibility and transparency, move, resize, rotate any object on screen. Change properties of basic and complex objects.
- Multilanguage applications with TrueType fonts. Easily create, install and maintain applications in multiple languages to meet global requirements.
- Data display in numerical, text, bargraph, analog gauges and graphic image formats.
- Rich set of state-of-the-art HMI features: data acquisition and logging, trend presentation, alarm handling, scheduler and timed actions (daily and weekly schedulers, exception dates), recipes, security and user management, e-mail and RSS feeds.
- Wide selection of communication drivers available with multiple-driver communication capability.
- Remote monitoring and control with Client-Server functionality.
- Off-line and on-line simulation with JMobile Studio.
- Powerful scripting language for automating HMI applications. Efficient script debugger improves productivity in application development.
- Rich gallery of objects and symbols.

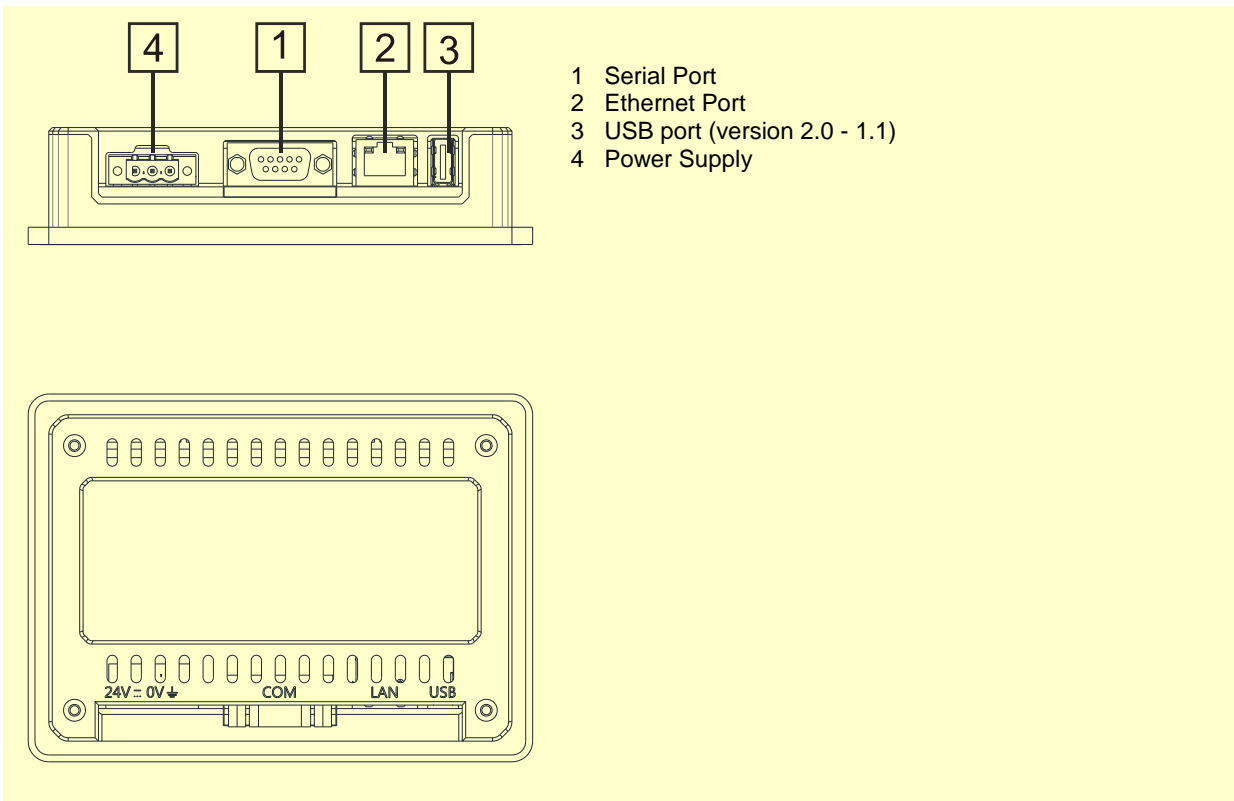
Technical Data

Display Type Resolution Active display area Colors Backlight Brightness Dimming	TFT 480x272 4.3" diagonal 64K LED 200 Cd/m ² typ. Yes	Fuse Weight	Automatic Approx 0.4 Kg
System Resources CPU Operating System RAM Flash Application memory Real Time Clock RTC backup Buzzer	ARM Cortex A8 300 MHz Linux 3.12 256 MB 2 GB 60 MB Yes Supercapacitor Yes	Environmental Conditions Operating temperature Storage temperature Operating and storage humidity Protection class	0 to 50 °C (vertical installation) -20 to +70 °C 5 – 85 % relative humidity, non-condensing Front: IP66, Type 2 and 4X Rear: IP20
User Interface Touchscreen	Resistive	Dimensions Faceplate LxH Cutout AxB Depth D+T	147x107 mm (5.78x4.21") 136x96 mm (5.35x3.78") 29+5 mm (1,14+0.19")
Interface Ethernet USB Serial	1x 10/100 Mbit 1x Host V2.0, max. 500 mA 1x RS-232/RS-485/RS-422, software configurable	Approvals CE	Emission EN 61000-6-4 Immunity EN 61000-6-2 for installation in industrial environments Emission EN 61000-6-3 Immunity EN 61000-6-1, for installation in residential environments
Ratings Power supply voltage Current consumption	24 Vdc (18 to 32 Vdc) 0.25 A max. at 24Vdc	UL	cULus

Dimensions



Connections



Ordering Information

Model	Part Number	Description
eSMART04	+ESMA04U301	4" widescreen TFT color touchscreen with Ethernet and USB interfaces. JMobile runtime.

ptn0521

Ver. 1.2

Copyright © 2015 Exor International S.p.A. – Verona, Italy

Subject to change without notice

The information contained in this document is provided for informational purposes only. While efforts were made to verify the accuracy of the information contained in this documentation, it is provided "as is" without warranty of any kind.

www.exorint.net