



MotoWare32

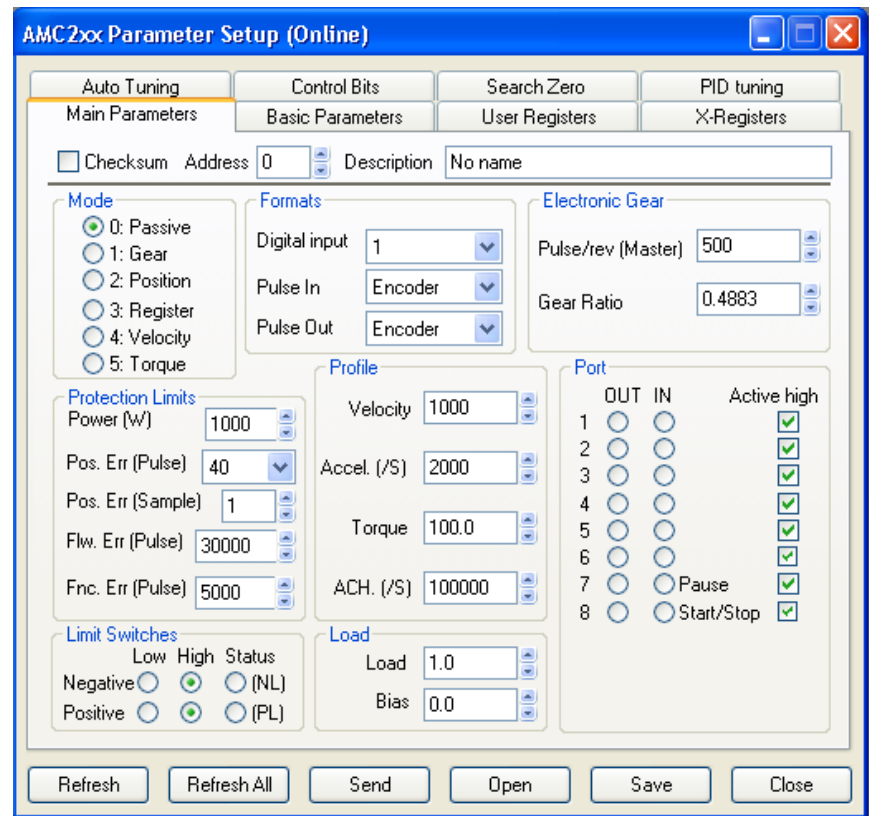
Programming Software for JVL Controllers

With JVL's new windows-based programming tool, MotoWare32, it is now easier to program your motor controller.

MotoWare32 allows you to easily edit one or several control programs simultaneously. Each program is saved in a separate file which can be opened and edited as required. Once a program has been written, it can be easily transferred to a Controller.

The Controller type, Controller address and whether checksum is to be used during transmission are selected. The [Send] button is then selected and the control program is transferred in the correct format to the selected controller.

MotoWare32 also enables "on-line" communication with a motor controller. The on-line editor window functions in the same way as a terminal program. Key-in a command string, press [Enter] and the command is sent to the selected controller. All responses from the controller are automatically detected and displayed.

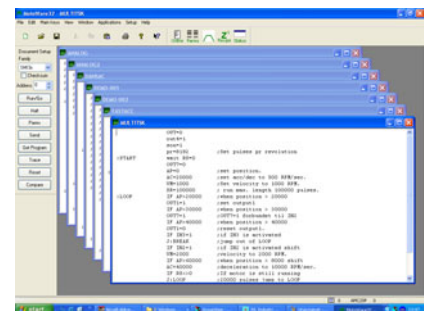


For users of JVL step- and servo controllers, SMI3x, SMC35 and AMC20, it is easy to create the correct set-up. MotoWare32 windows display a total overview of the various parameters. Several parameter sets can be stored using individual names, and these sets can be opened, edited and sent to the controller. The set-up of a specific controller can also be retrieved from the controller and displayed on the screen or stored in the computer.

With JVL AC-Servocontroller, AMC20, it is in addition possible to monitor motor power, veloc-

ity, torque etc. graphically to assist set-up and trouble shooting.

With the new Poll-function it is now possible to view different parameters used in the program when it is running.



MotoWare32

Motoware32 is supplied on a CD-Rom and is easily installed on a PC that fulfils the "System Requirements" below. MotoWare32 is built up like other standard Windows programs and it is therefore very easy to get started and use the program. The Main Menu is shown below:

The Main Menu can, as shown here, also contain document windows.

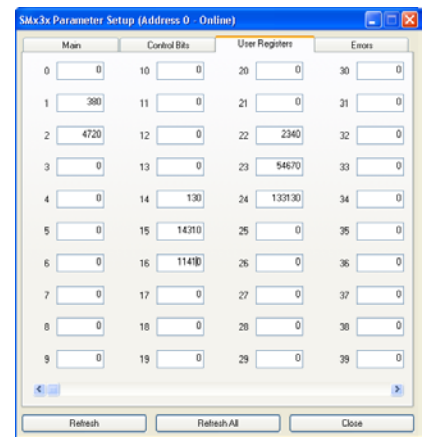
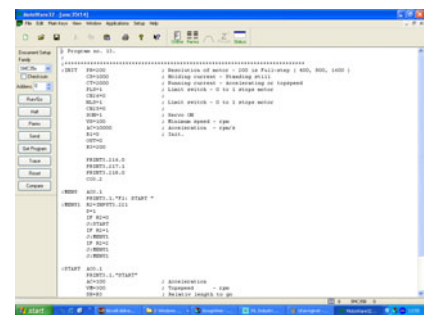
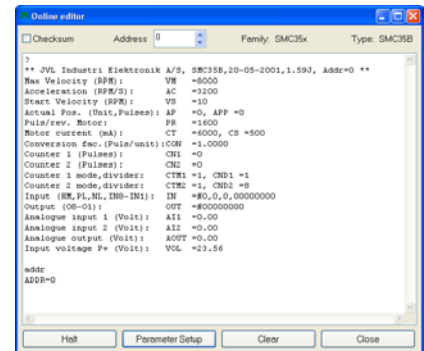
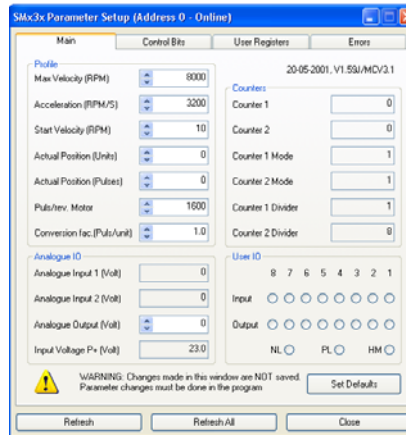
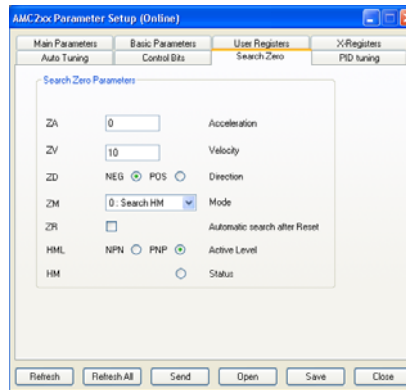
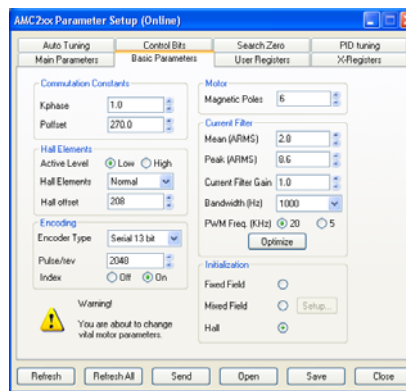
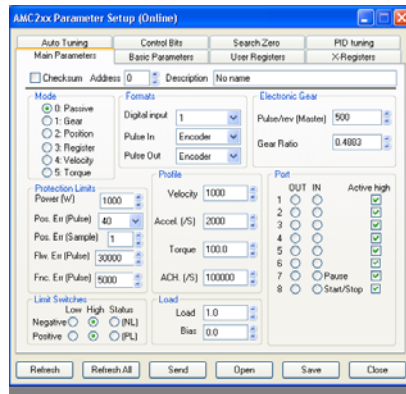
Controller programs are easily opened and edited. Simply select your controller and whether addressing and checksum are used. The control program code itself is written in a very simple BASIC-like language that is quickly learned. Once a program has been written, the SEND button is used to transmit the program to the controller in the correct format depending on the selected controller type, with information on addressing and checksum. If there is an error in the program code, the program line containing the error is automatically displayed.

The control program can be saved on hard-disk or diskette for subsequent use.

The On-Line Editor, shown below, enables direct communication with your controller. Simply key-in the command line, press <ENTER> and the command is sent to the controller in the correct format, with addressing and checksum information. Messages from the controller are received and automatically displayed.

It is also possible to obtain a very quick overview of the set-up of your servo-controller. A window shows the most important set-up parameters. To adjust individual parameters, simply key-in the required value in the correct field and select SEND. The new value is then set up on the Controller. It couldn't be simpler.

Motoware32 can be used for program-



System Requirements:

- PC with Windows 3.1 or later
- COM port available
- Hard-disk with 1.5-2 Mbyte available space



JVL Industri Elektronik A/S
 Blokken 42
 DK-3460 Birkerød, Denmark
 Tel: +45 4582 4440
 Fax: +45 4582 5550

E-mail: jvl@jvl.dk www.jvl.dk
 Sold & Serviced By:



Toll Free Phone (877) SERV098
 Toll Free Fax (877) SERV099
www.electromate.com
sales@electromate.com

ming JVL Motor Controllers, SMI3x, SMC35 and AMC20.