

RCS2-RT6R

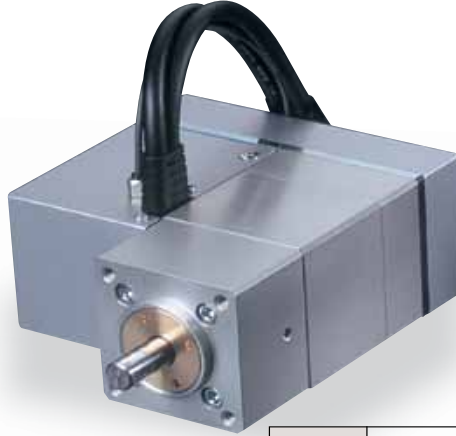
ROBO Cylinder Rotary Side-Mounted Motor 64mm Width 200V Servo Motor

■ Configuration: **RCS2** — **RT6R** — **I** — **60** — **18** — **300** — — — **L**

Series — Type — Encoder — Motor — Deceleration Ratio — Oscillation Angle — Compatible Controllers — Cable Length — Option

I: Incremental 60: 60W Servo Motor 18: 1/18 300: 300degrees T1:XSEL-J/K N: None L: Limit switch (equipped as standard)
 T2:SCON P: 1m S: 3m
 SSEL M: 5m
 XSEL-P/Q X : Custom
 R : Robot cable

* See page Pre-35 for an explanation of the naming convention.



Technical References P. A-5



- (1) The thrust load is the mechanical strength of the output axis at rest. When selecting, take into account the load moment and the load inertia.
- (2) The rated acceleration while moving is 0.3G.

Actuator Specifications

Lead and Load Capacity

Model	Motor Output (W)	Deceleration Ratio	Rated torque (N·m)	Allowable Moment of Inertia (kg·m ²)	Oscillation Angle (deg)
RCS2-RT6R-I-60-18-300-①-②-L	60	1/18	2.4	2.5×10 ⁻² or less	300

Legend: ① Compatible controller ② Cable length

Stroke and Maximum Speed

Deceleration Ratio	Oscillation Angle	300 (deg)
	300 (deg)	
1/18	500	

(Unit: degrees/s)

Stroke List

Oscillation Angle (deg)	Standard Price
300	-

② Cable List

Type	Cable Symbol	Standard Price
Standard Type	P (1m)	-
	S (3m)	-
	M (5m)	-
Special Lengths	X06 (6m) ~ X10 (10m)	-
	X11 (11m) ~ X15 (15m)	-
	X16 (16m) ~ X20 (20m)	-
Robot Cable	R01 (1m) ~ R03 (3m)	-
	R04 (4m) ~ R05 (5m)	-
	R06 (6m) ~ R10 (10m)	-
	R11 (11m) ~ R15 (15m)	-
	R16 (16m) ~ R20 (20m)	-

* See page A-39 for cables for maintenance.

Actuator Specifications

Item	Description
Drive System	Ball speed reducer + timing belt
Positioning Repeatability	±0.02 degrees
Lost Motion	0.1 degrees or less
Base	Material: Aluminum (white alumite treated)
Allowable Load Moment	6.8N·m or less
Thrust load	100N or less
Ambient Operating Temp./Humidity	0 ~ 40°C, 85% RH or less (non-condensing)

367

RCS2-RT6R

- Slider Type
- Mini
- Standard
- Controllers Integrated
- Rod Type
- Mini
- Standard
- Controllers Integrated
- Table/Arm/Flat Type
- Mini
- Standard
- Gripper/ Rotary Type
- Linear Servo Type
- Cleanroom Type
- Splash-Proof
- Controllers
- PMEC /AMEC
- PSEP /ASEP
- ROBO NET
- ERC2
- PCON
- ACON
- SCON
- PSEL
- ASEL
- SSEL
- XSEL
- Pulse Motor
- Servo Motor (24V)
- Servo Motor (200V)
- Linear Servo Motor

