

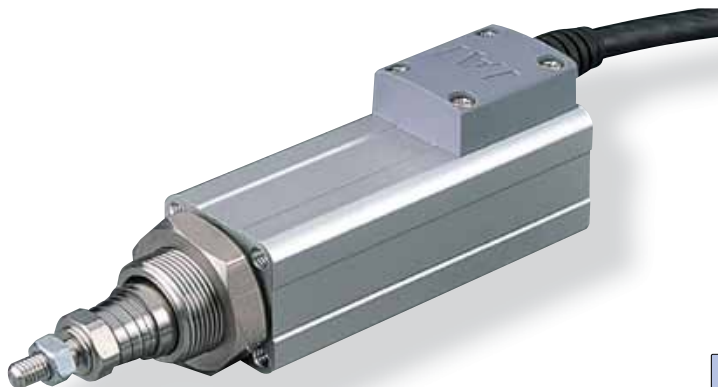
RCA2-RN4N

ROBO Cylinder Mini Rod Type Short-Length Nut-Mounting Type
34mm Width 24V Servo Motor Ball Screw/Lead Screw

■ Configuration: **RCA2** — **RN4N** — **I** — **20** — — **30** — — —

Series	Type	Encoder	Motor	Lead	Stroke	Compatible Controllers	Cable Length	Option
I: Incremental * The Simple absolute encoder is also considered type "I".		20 : 20W Servo Motor	6 : 6mm ball screw 4 : 4mm ball screw 2 : 2mm ball screw 6S : 6mm lead screw 4S : 4mm lead screw 2S : 2mm lead screw	30 : 30mm	A1 : ACON RACON ASEL A3 : AMEC ASEP	N : None P : 1m S : 3m M : 5m X <input type="checkbox"/> : Custom	K2 : Connector Cable exit direction LA : Power-saving	

* See page Pre-35 for an explanation of the naming convention.



Power-saving

Technical References P. A-5

- POINT**
Notes on Selection
- The lead screw is not equipped with an anti-rotation device. Therefore, when using the actuator, add an anti-rotation device such as a guide to the end of the lead screw prior to use. (Without an anti-rotation device, the lead screw will rotate, and will not extend or retract.)
 - The load capacity is based on operation at an acceleration of 0.3G (0.2G for the 2mm-lead model, lead screw model, or when used vertically). This is the upper limit of the acceleration.
 - Do not apply any external force on the rod from any direction other than the direction of the rod's motion.
 - When using the lead screw model, please use it for applications that are suitable for its characteristics. (See page Pre-42 for more information.)

Actuator Specifications

Lead and Load Capacity

Model	Motor Output (w)	Feed Screw	Lead (mm)	Max. Load Capacity		Rated Thrust (N)	Positioning Repeatability (mm)	Stroke (mm)
				Horizontal (kg)	Vertical (kg)			
RCA2-RN4N-I-20-6-30-①-②-③	20	Ball Screw	6	2	0.5	33.8	±0.02	30 (Fixed)
RCA2-RN4N-I-20-4-30-①-②-③			4	3	0.75	50.7		
RCA2-RN4N-I-20-2-30-①-②-③			2	6	1.5	101.5		
RCA2-RN4N-I-20-6S-30-①-②-③	20	Lead Screw	6	0.25	0.125	19.9	±0.05	30 (Fixed)
RCA2-RN4N-I-20-4S-30-①-②-③			4	0.5	0.25	29.8		
RCA2-RN4N-I-20-2S-30-①-②-③			2	1	0.5	59.7		

Legend ① Compatible controller ② Cable length ③ Options

Stroke and Maximum Speed

Lead	Stroke	
	30 (mm)	30 (mm)
Ball Screw	6	270 <220>
	4	200
	2	100
Lead Screw	6	220
	4	200
	2	100

* The values enclosed in < > apply for vertical usage. (Unit: mm/s)

Stroke List

Stroke (mm)	Standard Price	
	Ball Screw	Lead Screw
30	-	-

② Cable List

Type	Cable Symbol	Standard Price
Standard (Robot Cables)	P (1m)	-
	S (3m)	-
	M (5m)	-
Special Lengths	X06 (6m) ~ X10 (10m)	-
	X11 (11m) ~ X15 (15m)	-
	X16 (16m) ~ X20 (20m)	-
		-

* The RCA2 comes standard with a robot cable.

* See page A-39 for cables for maintenance.

③ Option List

Name	Option Code	See Page	Standard Price
Connector cable exit direction	K2	→ A-32	-
Power-saving	LA	→ A-32	-

Actuator Specifications

Item	Description
Drive System	Ball screw/lead screw ø6mm C10 grade
Lost Motion	Ball screw: 0.1mm or less/Lead screw: 0.3mm or less (initial value)
Frame	Material: Aluminum (white alumite treated)
Ambient Operating Temp./Humidity	0~40°C, 85% RH or less (non-condensing)
Service Life	Lead Screw: Horizontal: 10 million cycles Vertical: 5 million cycles

179 RCA2-RN4N

