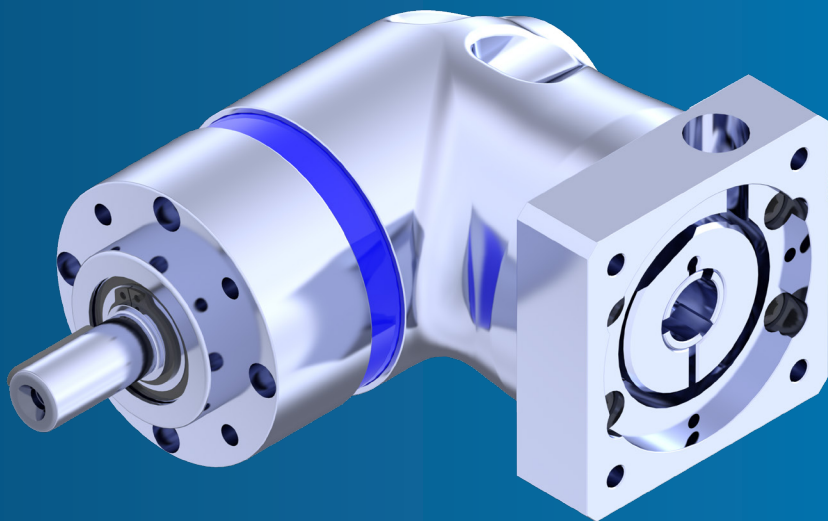


EPR & PER Series

RIGHT ANGLE BEVEL PLANETARY GEARBOXES



Sold & Serviced By:

 **ELECTROMATE**

Toll Free Phone (877) SERV098

Toll Free Fax (877) SERV099

www.electromate.com

sales@electromate.com

GAM CAN.

EPR and PER Series

The EPR and PER Series Right Angle Bevel Planetary Gearboxes provide all the advantages of our popular EPL and PE inline gearboxes in a right angle configuration. Offering the best quality available for the price point, the EPR and PER are ideal for most servo, stepper and other motion control applications. With the same selection of outputs as the EPL and PE, there is an EPR or PER to fit your application.

EPR Series

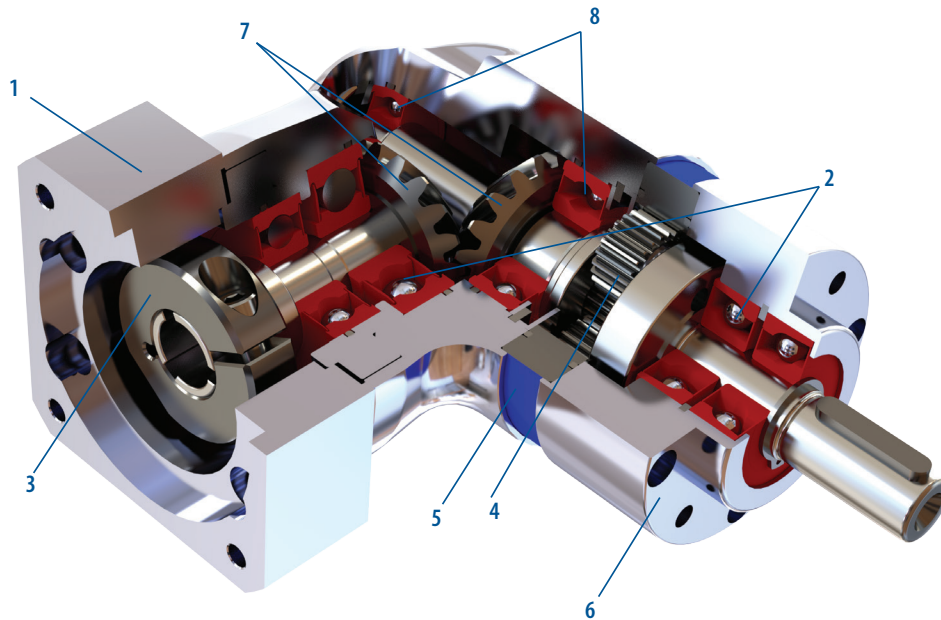
The EPR performance right angle bevel planetary gearbox offers the best quality available for the price point with features unequaled in its class.

- Easy to configure with 5 outputs matching the EPL
- 30,000 hours of service life for most models
- Ratios from 3:1 to 1000:1
- Ready to mount to your motor

The PER offers

The PER right angle bevel planetary gearbox is a value alternative to the EPR when radial or axial loadings are minimized.

- PER-W with a metric output
- PER-N with a NEMA output
- Ratios from 3:1 to 1000:1
- Ready to mount to your motor



1. Adapter Plate
(Customized adapter plates for quick and easy motor mounting)

2. EPL: Angular Contact Bearings
(for high radial and axial loading)
PER: Deep Groove Ball Bearings
(dual ball bearings)

3. Input Clamping Element

4. Planet Gears
(Precision ground gears)

5. Ring Gear
(Ring gear incorporated into housing)

6. Output face

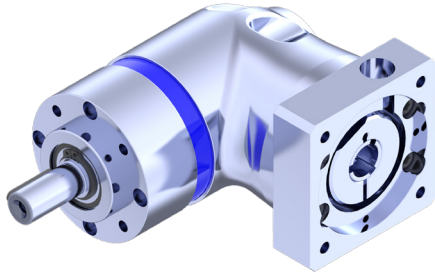
7. Precision ground spiral bevel gears

8. Bevel gear supported at both ends
(input to planetary)

Sold & Serviced By:
 **ELECTROMATE**

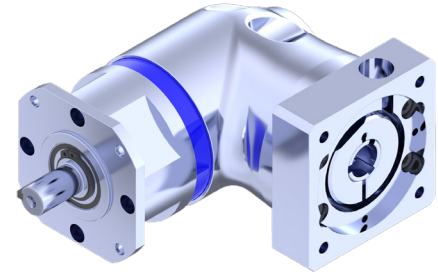
Toll Free Phone (877) SERV098
Toll Free Fax (877) SERV099
www.electromate.com
sales@electromate.com

EPR Series



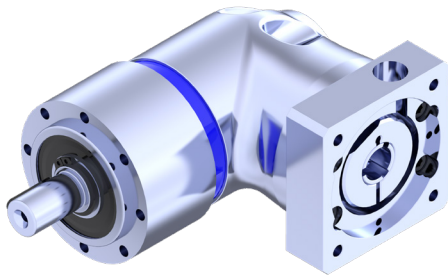
EPR-W

- GAM metric output face with heavy-duty output bearings
- Frame sizes from 50 mm to 150 mm



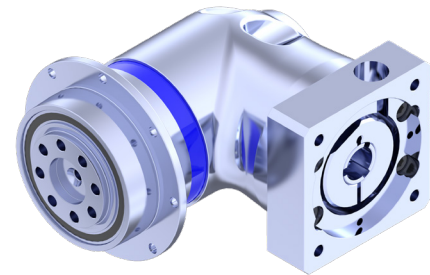
EPR-X

- NEMA output face with oversized English shaft
- Frame sizes from NEMA 17 to 56



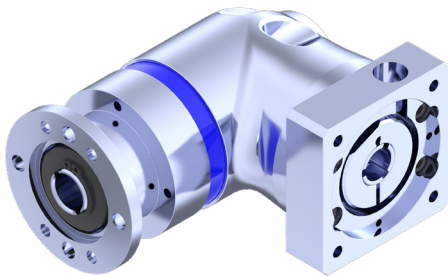
EPR-A

- Metric output dimensions match popular gearboxes
- Frame sizes from 50 mm to 155 mm



EPR-F

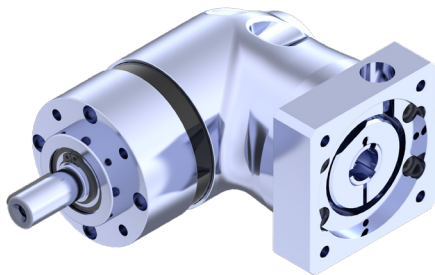
- Flange output
- Sizes from 110 mm to 140 mm



EPR-H

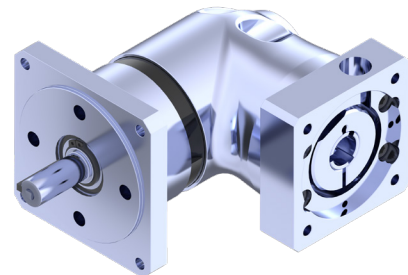
- Hollow output with zero-backlash clamping ring for direct connection to any linear actuator
- Sizes from 64 mm to 118 mm

PER Series



PER-W

- GAM Metric output face
- Frame sizes from 50 mm to 118 mm



PER-N

- NEMA output face
- Frame sizes from NEMA 17 to 42

Sold & Serviced By:



Toll Free Phone (877) SERV098
Toll Free Fax (877) SERV099
www.electromate.com
sales@electromate.com